

**LaGrange County Public Library
Package "I" Furniture Schedule**

Bid Item	Location	Rm. No.	MFG	Product Number	Product Description	Color	Qty	Unit	Proposed Mfg	Total Bid
1	First and Second Floor	105, 111, 112, 133, 134, 135, 149, 204, 205, 207, 213	N/A	N/A	Book Shelf End Panels and Tops - see attached sheet for additional information	See Attached Sheet for more Information	N/A	N/A		
2	Play Area	135	Custom	N/A	Children's Desk - 3/4" plywood table top cabinet see drawing for additional information	See attached drawing for more information	1	ea		
						Package "I" Total Bid:				

BOOK SHELVING CASEWORK						
SHELVING TAG	END PANEL ELEVATION			LAMINATE TOP		
	ELEVATION "A" (HGT)	ELEVATION "B" (HGT)	NOTES	PLAN "C" (LENGTH)	PLAN "D" (LENGTH)	NOTES
C1	85					
C2	61			(8) 288		
C3		49			(4) 144 (6) 216	
C4		49			(6) 216	
C5	88					
C6	61			(1) 36		
C7	67			(4) 144		
C8		49			(4) 144	
C9		49			(4) 144	
C10	85					
C11	61			(2) 72		
C12	61			(7) 252		
C13		49			(7) 252 (4) 144 (2) 72	
C14		37			(3) 108	
C16		56			(3) 108	
C17	85					
C18	34			(3) 108 (4) 144 (5) 180 (7) 252		
C19		85				
C20 & C21	37				(4) 126 (2) 60 (3) 90	

GENERAL NOTES:

1. CONTRACTOR IS RESPONSIBLE FOR CONTACTING FCS GROUP FOR ATTACHMENT REQUIREMENTS. CONTRACTOR SHALL PROVIDE AND INSTALL ALL NECESSARY ITEMS FOR COMPLETE INSTALLATION.
2. CONTRACTOR IS RESPONSIBLE FOR QUANTITIES SEE ATTACHED CASEWORK PLAN SHEETS.
3. ALL MEASUREMENTS PROVIDED ARE IN "INCHES".
4. CONTRACTOR SHALL MAKE FIELD MODIFICATION REQUIRED TO ACCOMMODATE ANY AND ALL DISCREPANCIES IN SHELVING INSTALLATION.

LEGEND:

- (#) INDICATES NUMBER OF BOOK SHELVES GANGED TOGETHER

PLASTIC LAMINATE COUNTERTOP:

LAMINATE "L2" FORMICA
COLOR: "TRAVERTINE" No. 3526-77
FINISH: MATTE

AISLE MARKER CARD HOLDER:

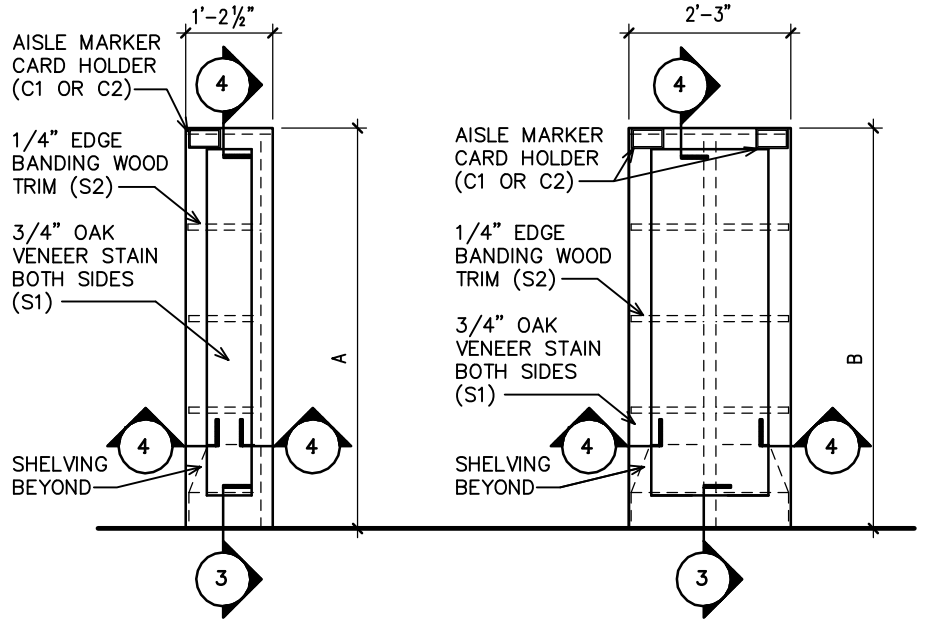
"C1" VERNON "AISLE MARKER CARD HOLDER - SINGLE"
ITEM NO. 015732W0082000
USED ON ALL SHELVING EXCEPT ADULT SHELVING

"C2" VERNON "RANGE FINDER SIGNAGE"
ITEM NO. 015732D0081000
USED ON ADULT SHELVING ONLY

STAINED WOOD:

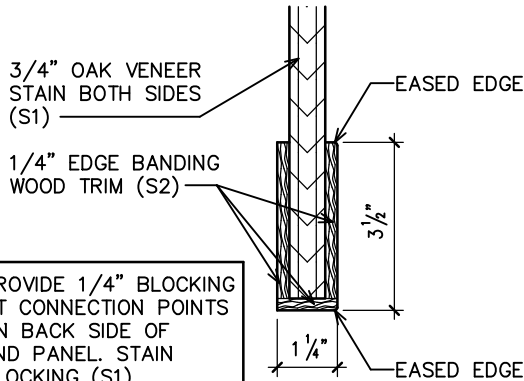
STAIN "S1" MARSHFIELD COLOR MATCH: "NUTMEG"
SURFACE: PANEL

STAIN "S2" MARSHFIELD COLOR MATCH: "BOMBAY"
SURFACE: TRIM



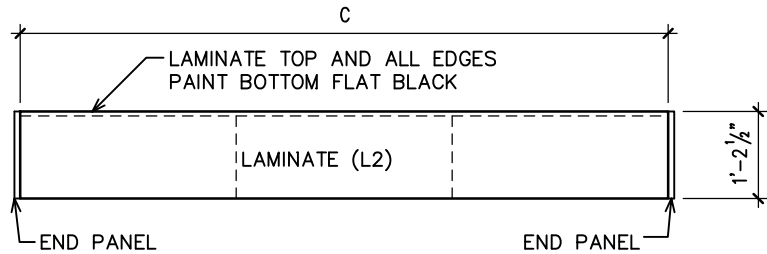
ELEVATION "A"

ELEVATION "B"

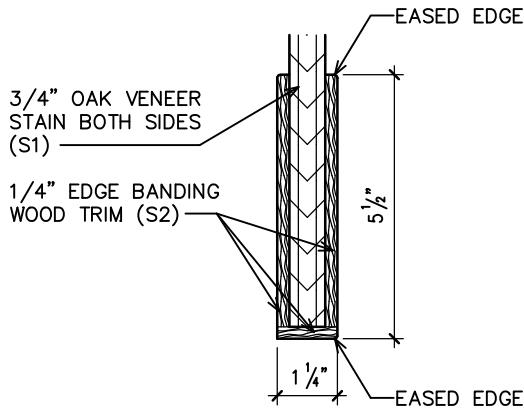


4 END PANEL DETAIL
3" = 1'-0"

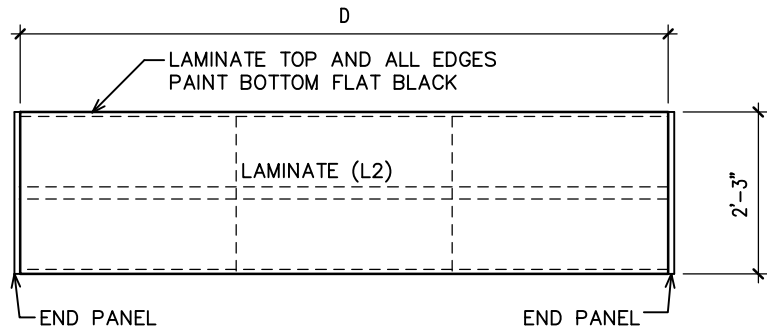
1 END PANEL ELEVATIONS
3/8" = 1'-0"



PLAN "C"



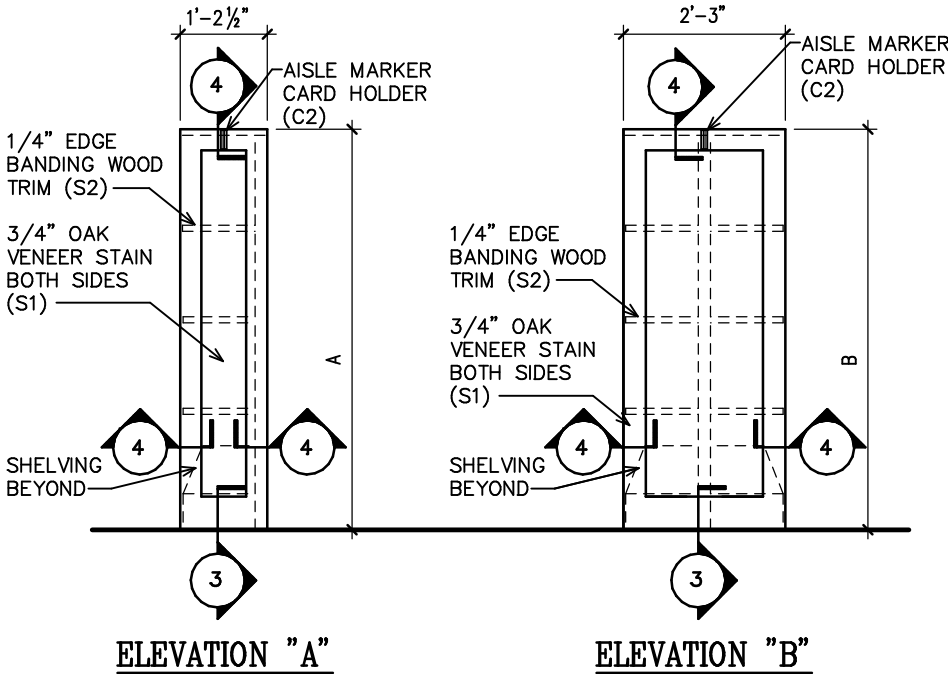
3 BOT. PANEL DETAIL
3" = 1'-0"



PLAN "D"

2 CASEWORK TOP PLAN
3/8" = 1'-0"

(11)



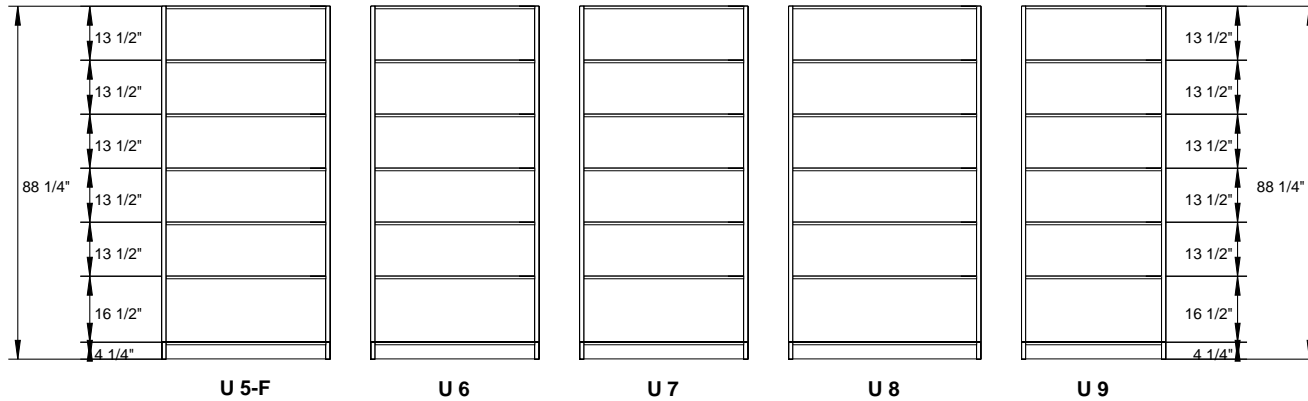
1

ADULT END PANEL ELEVATIONS

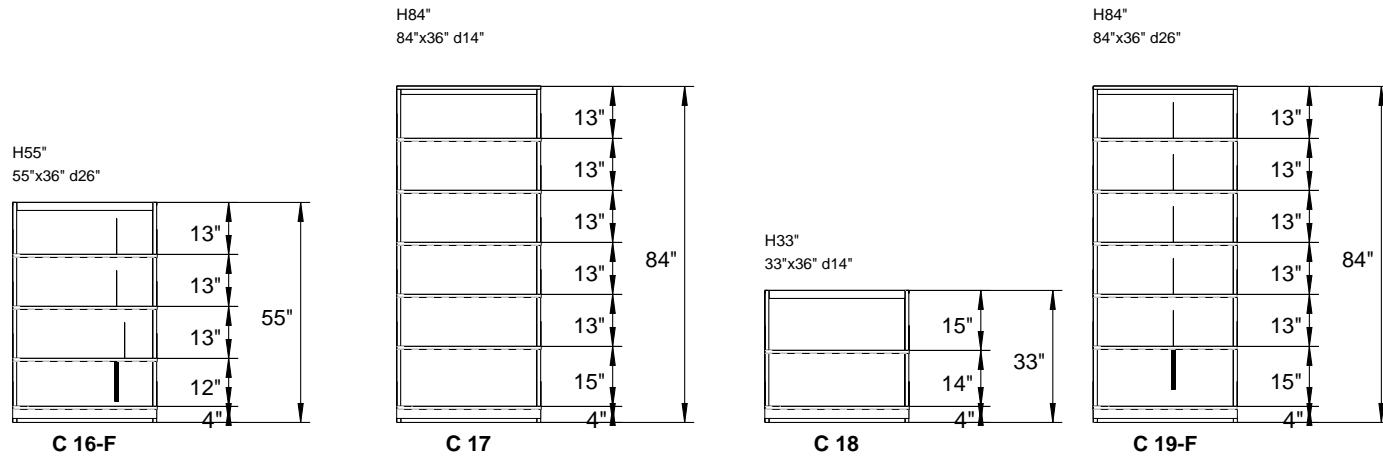
3/8" = 1'-0"

SECOND FLOOR ELEVATIONS

H88 1/4" 88 1/4"x42" d24" H88 1/4" 88 1/4"x42" d12" H88 1/4" 88 1/4"x42" d12" H88 1/4" 88 1/4"x48" d12" H88 1/4" 88 1/4"x36" d12"



Four-Post Elevations



Cantilever Elevations 12" deep base shelf--10" adj. shelves



Project Name:

LaGrange County Library

Saved Date:

09/16/2010

Project No:

12324

Printed Date:

12/09/2010

Revision:

Copyright © 2010 Bradford Systems Corporation IL. This material is proprietary and confidential, and the disclosure reproduction by photography, film, blueprint or otherwise or incorporation into any information retrieval system without first receiving written approval from Bradford Systems Corporation IL is expressly prohibited by law.

Scale:

1/4" = 1'

Total Actual LFI:

94010 LFI

Rep:

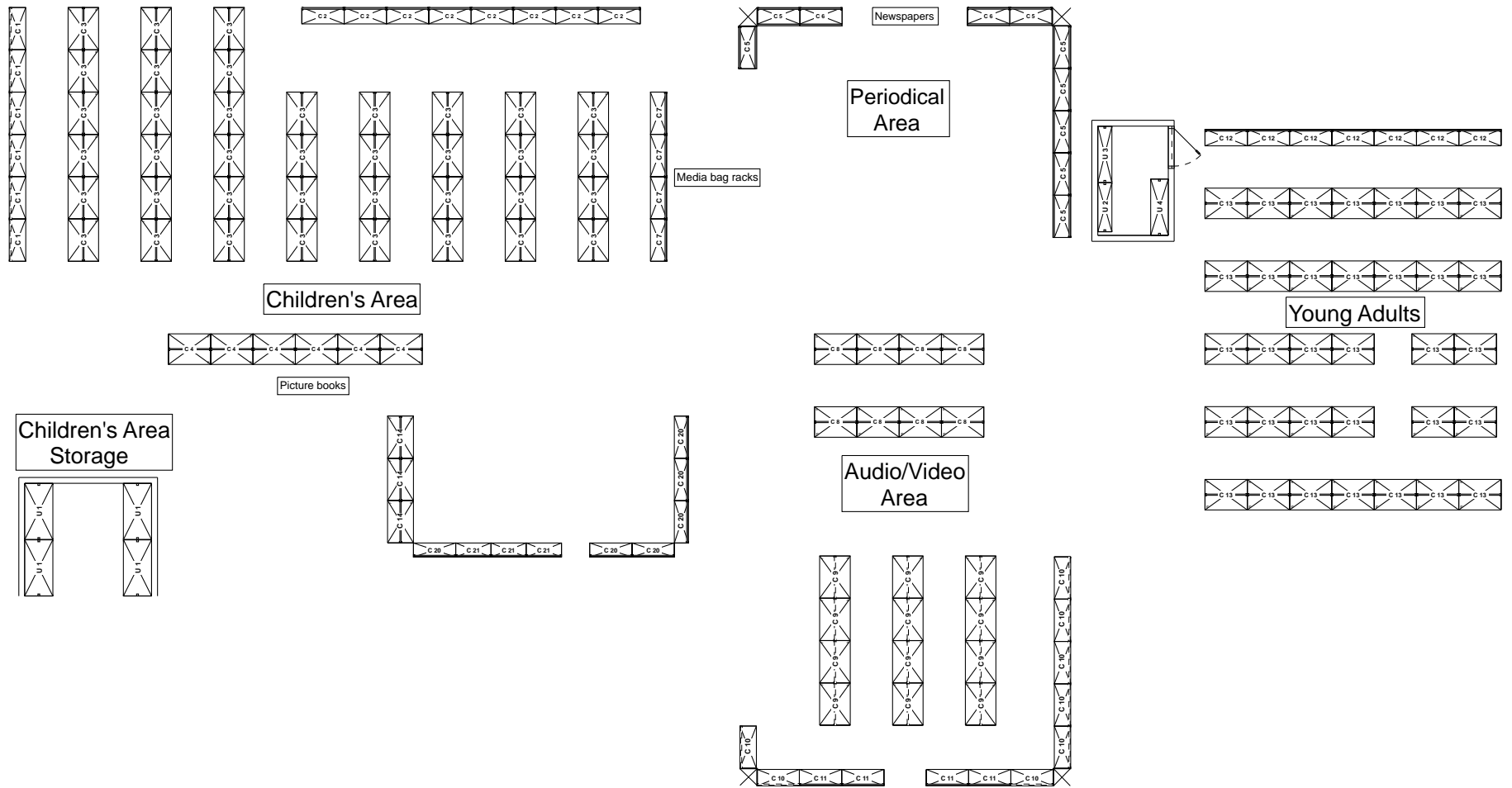
James Bednarski

Drwn by:

Doug Evans

Sheet No:

1 of 4



1st Floor

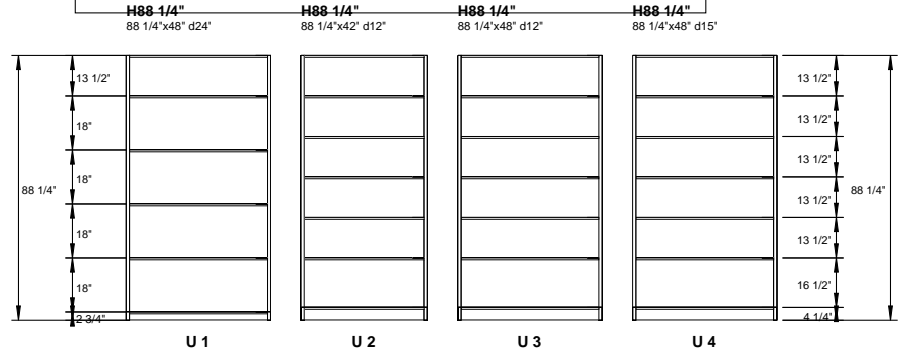


Project Name:
LaGrange County Library

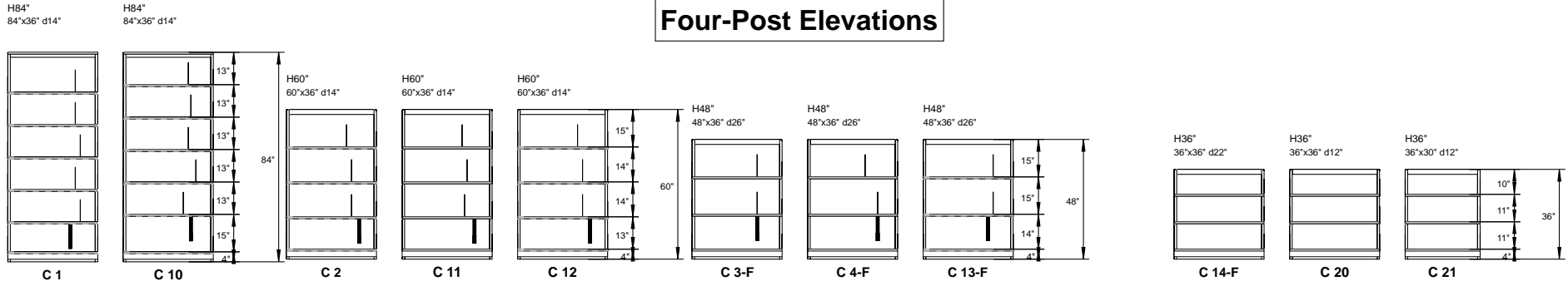
Copyright © 2010 Bradford Systems Corporation IL. This material is proprietary and confidential, and the disclosure reproduction by photography, film, blueprint or otherwise or incorporation into any information retrieval system without first receiving written approval from Bradford Systems Corporation IL is expressly prohibited by law.

Saved Date: 09/16/2010	Project No: 12324
Printed Date: 12/09/2010	Revision:
Scale: 1:135	Total Actual LFI: 94010 LFI
Rep: James Bednarski	Drwn by: Doug Evans
Sheet No: 2 of 4	

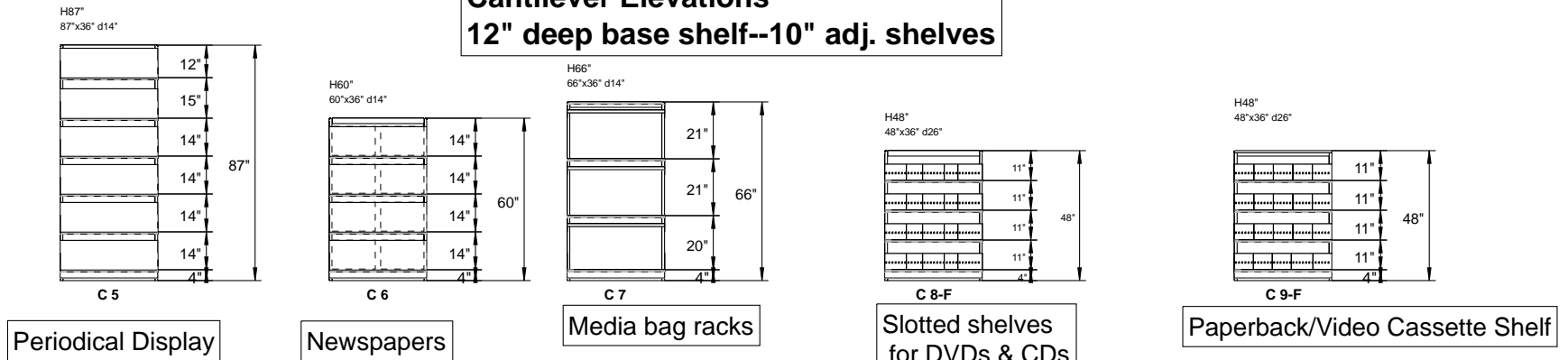
FIRST FLOOR ELEVATIONS



Four-Post Elevations



Cantilever Elevations 12" deep base shelf--10" adj. shelves



Project Name:

LaGrange County Library

Copyright © 2010 Bradford Systems Corporation IL. This material is proprietary and confidential, and the disclosure reproduction by photography, film, blueprint or otherwise or incorporation into any information retrieval system without first receiving written approval from Bradford Systems Corporation IL is expressly prohibited by law.

Saved Date:

09/16/2010

Printed Date:

12/09/2010

Scale:

3/16" = 1'

Rep:

James Bednarski

Drwn by:

Doug Evans

Project No:

12324

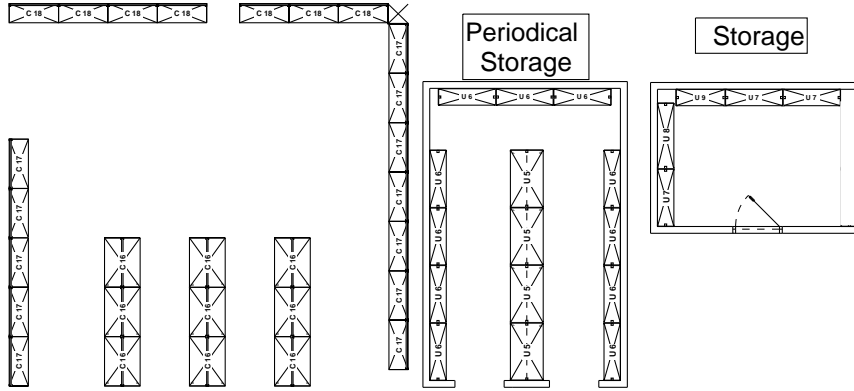
Revision:

Total Actual LFI:

94010 LFI

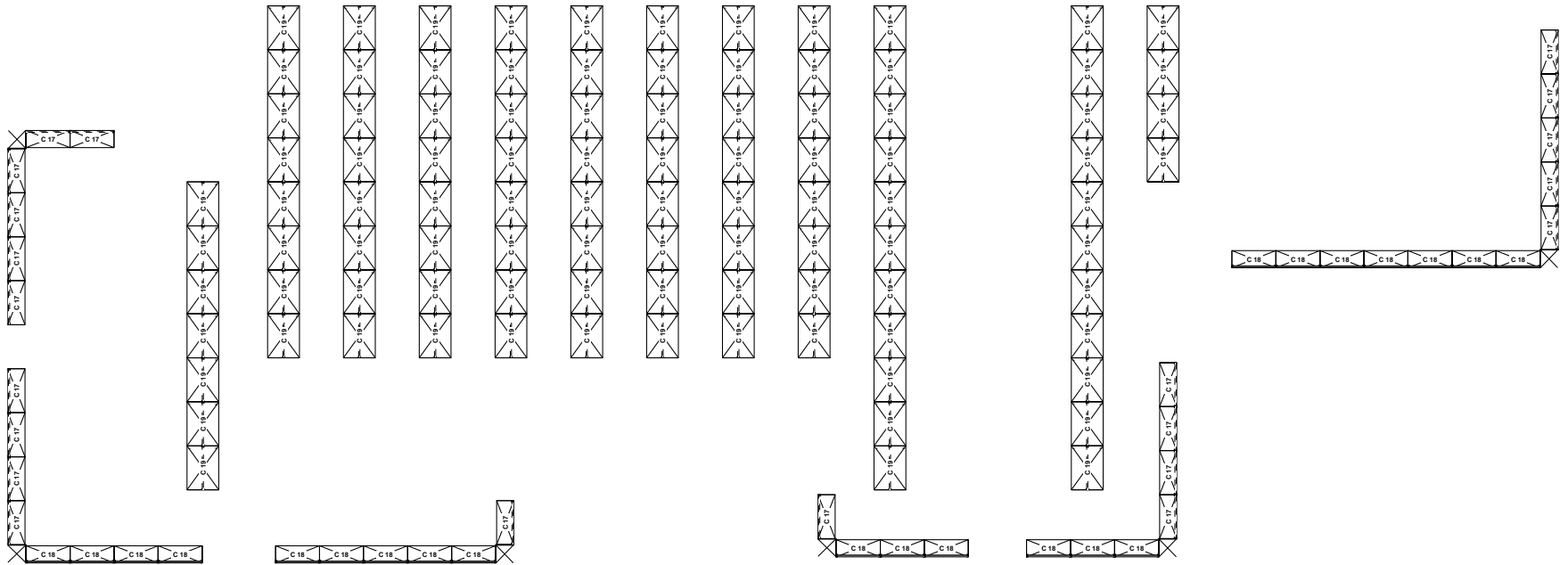
Sheet No:

3 of 4



2nd Floor

Adult Area



Project Name:

LaGrange County Library

Copyright © 2010 Bradford Systems Corporation IL. This material is proprietary and confidential, and the disclosure reproduction by photography, film, blueprint or otherwise or incorporation into any information retrieval system without first receiving written approval from Bradford Systems Corporation IL is expressly prohibited by law.

Saved Date:

09/16/2010

Printed Date:

12/09/2010

Scale:

1:140

Rep:

James Bednarski

Drwn by:

Doug Evans

Project No:

12324

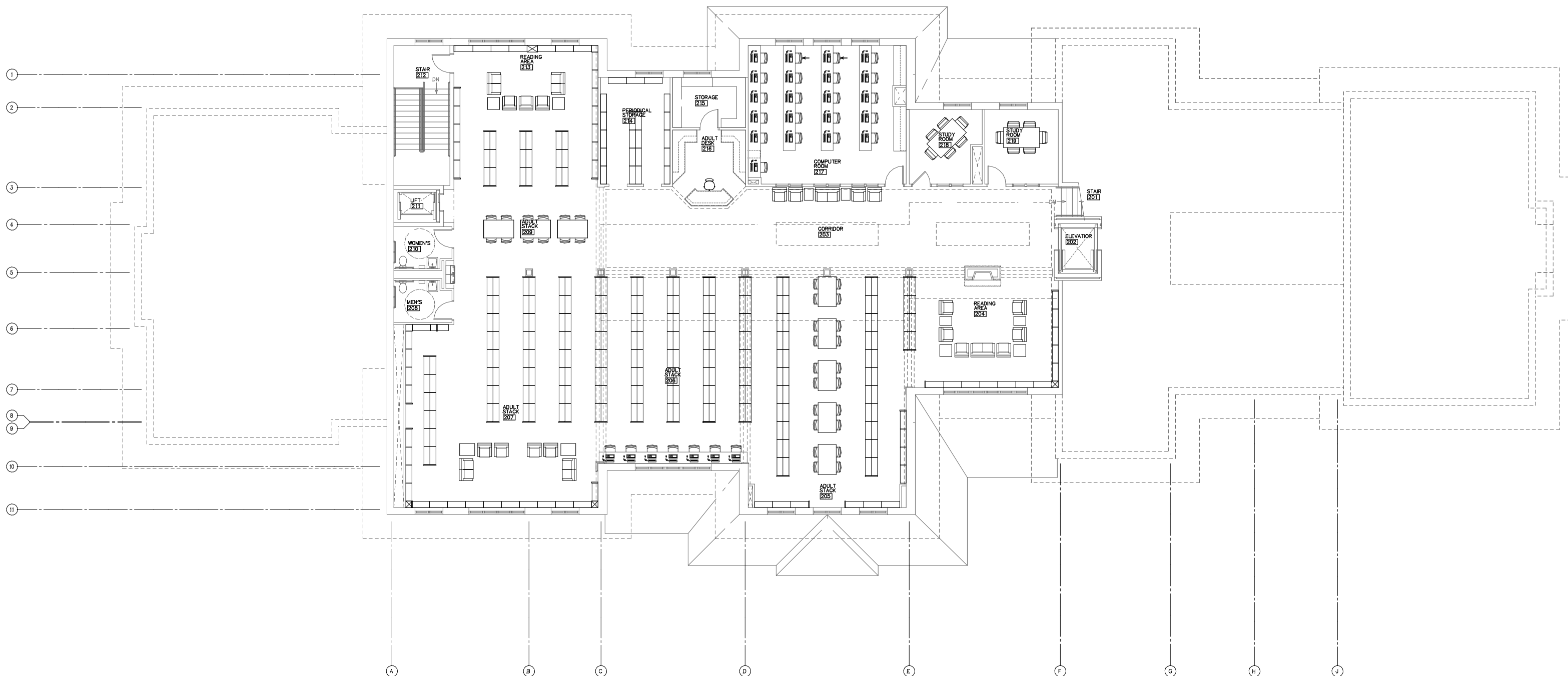
Revision:


Total Actual LFI:

94010 LFI

Sheet No:

4 of 4




SECOND FLOOR PLAN
 SCALE: 1/8" = 1'-0"
 PLAN NORTH